

# Beginner Tablet Weaving

## Notes for a 2-hour Workshop

Eowyn de Wever  
eowyn.cenek@gmail.com

### 1 Prerequisite

For this workshop the student should have a loom warped with 20 tablets in 2 colours.

The four holes in each tablet should be threaded so that threads of each colour go through adjacent holes. The threading direction for each tablet is not important as tablets will be vertically flipped – reversing threading direction – as required.

### 2 Reading The Patterns

Each pattern is read from the bottom up. Each column represents one tablet and is read as follows, assuming that the weaver is sitting with the loom in front of them:

- The diagonal slash indicates the direction the thread travels through the tablet, as seen from above. Hence a / indicates that the thread travels from left to right through the tablet.
- The two coloured circles indicate the colour of the threads in the top holes. The bottom colour represents the top hole closest to the weaver, the top colour represents the top hole furthest from the weaver.
- Each row of squares represents one pick or quarter turn of the tablets.
  - A square with a white background indicates the tablet is turned forwards, away from the weaver.
  - A square with a grey background indicates the tablet is turned backwards, towards the weaver.
  - The coloured diagonal indicates the direction of twining, and the visible colour.

### 3 Weaving the Band

**Prep** Turn all the cards backwards (towards yourself) once, then place a popsicle stick. This makes it easier to make a clean start. Turn the cards forward again.

**Start** Place the weft in the shed, leaving a 6" + tail.

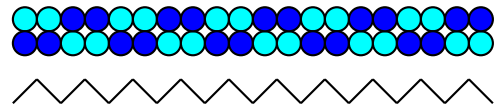
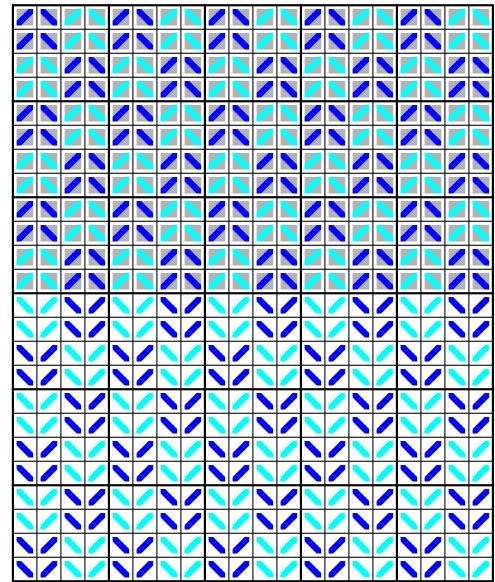
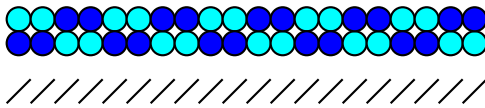
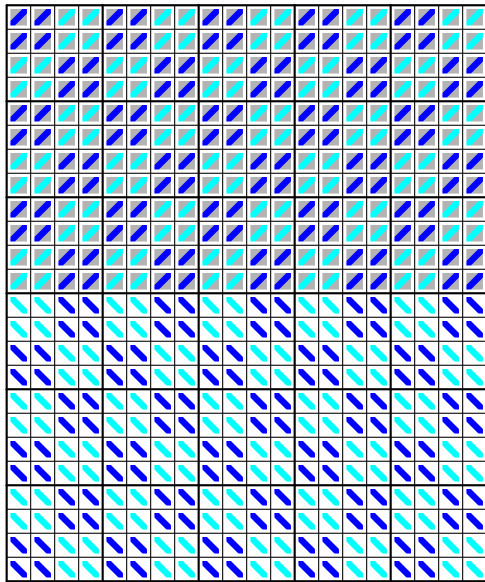
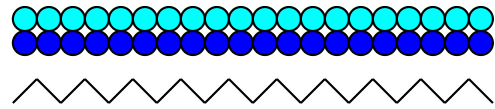
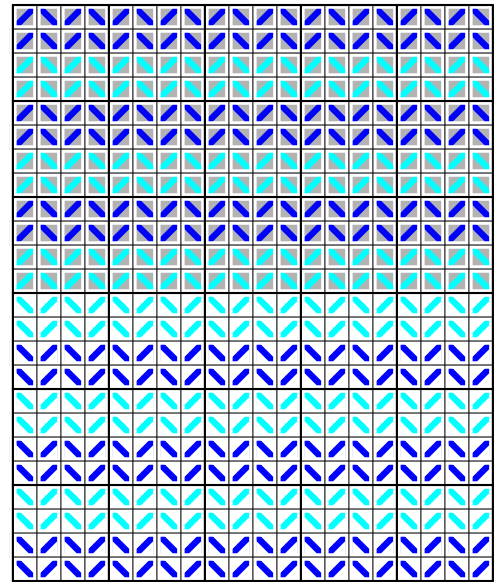
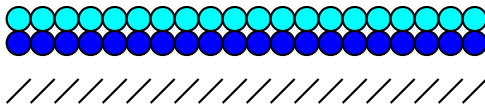
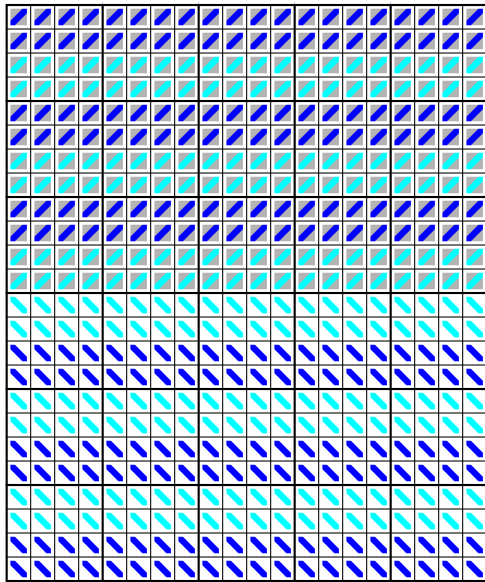
**Weaving**

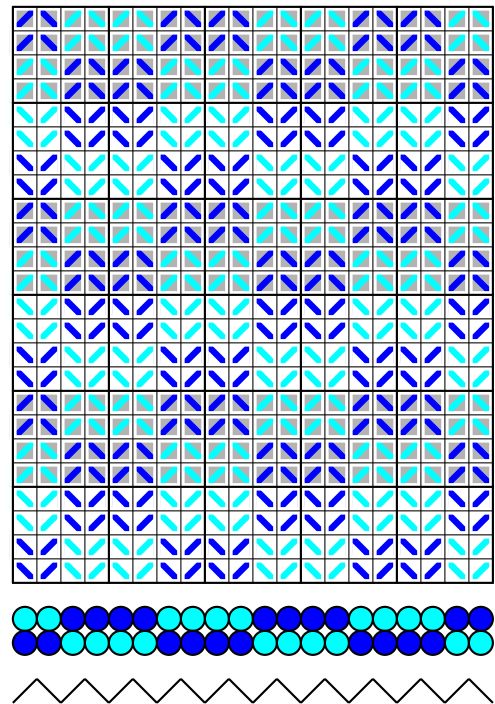
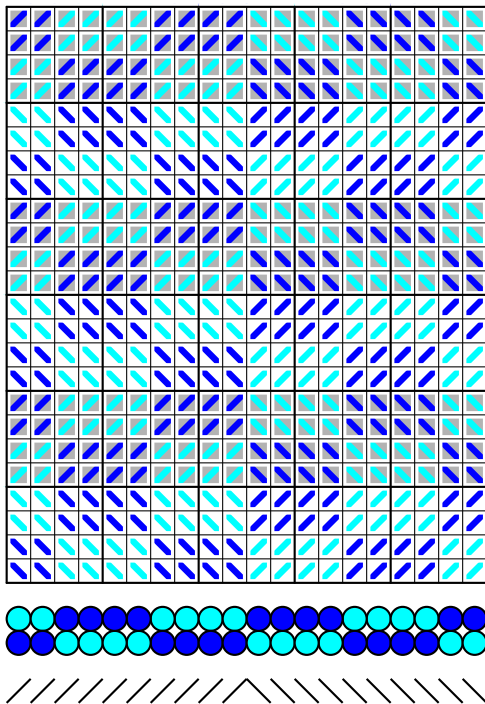
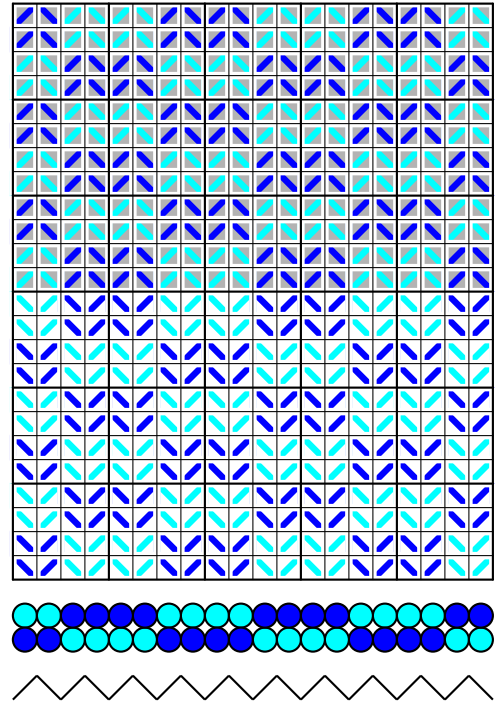
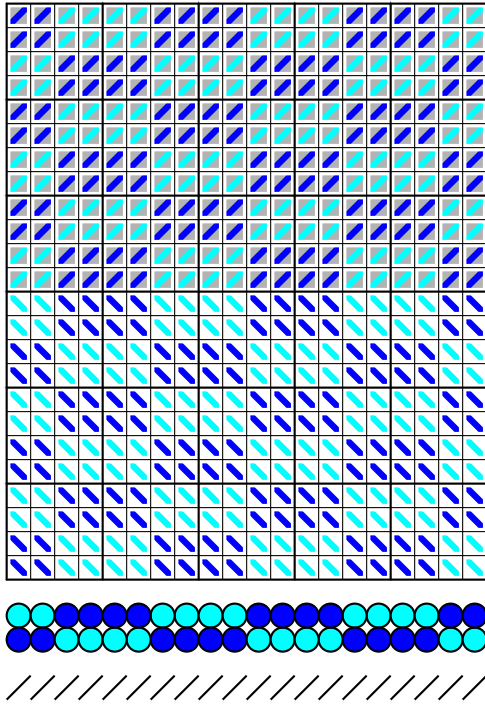
- check the pattern row to see how the tablets should turn and turn the tablets
- clear the shed
- insert the shuttle and beat
- pull the shuttle through (and if there is tail left, pull it in the opposite direction.)
- Do *NOT* pull the weft tight until after the following quarter turn and beating.

Repeat the Weaving step until you reach the end of the band.

### 4 Patterns

These patterns are divided into two streams based on the threading. In the left column, all the cards are threaded the same way. In the right column, threading direction alternates. To switch from patterns in one column to the other, you will need to flip the cards around their vertical axis.





In this last set of patterns we change it up a little, and then I included some blanks for you to try your own designs.

